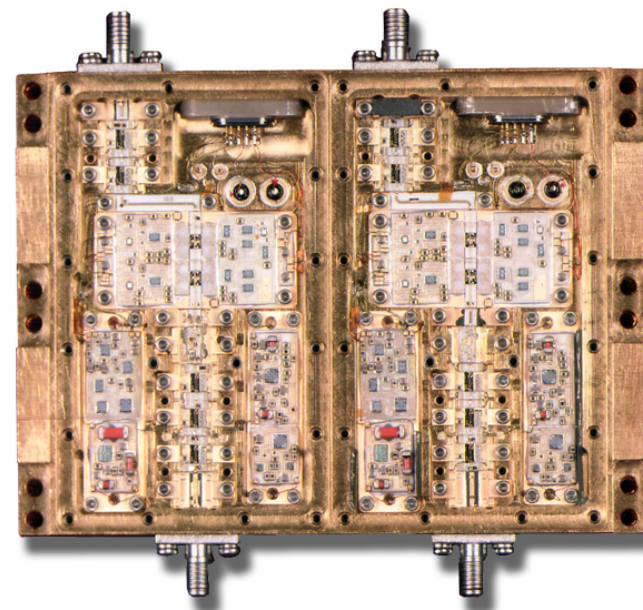
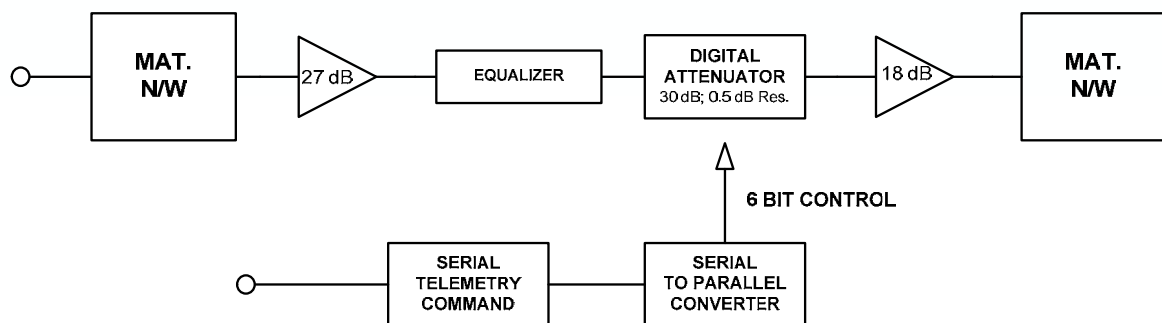


AMPLIFIER ASSEMBLIES

Dual Channel Miniature SAT-COM Driver Amplifier

BLOCK DIAGRAM:



KEY SPECIFICATIONS:

- Frequency Range: 3.7 to 4.2 GHz
- Noise Figure: 4.0 dB
- Intermodulation: 45 dBc (@ 3.0 dB back-off point)
- Gain Flatness (500 MHz BW): 0.2 dB Peak to Peak
- Input/Output V.S.W.R.: 1.2:1